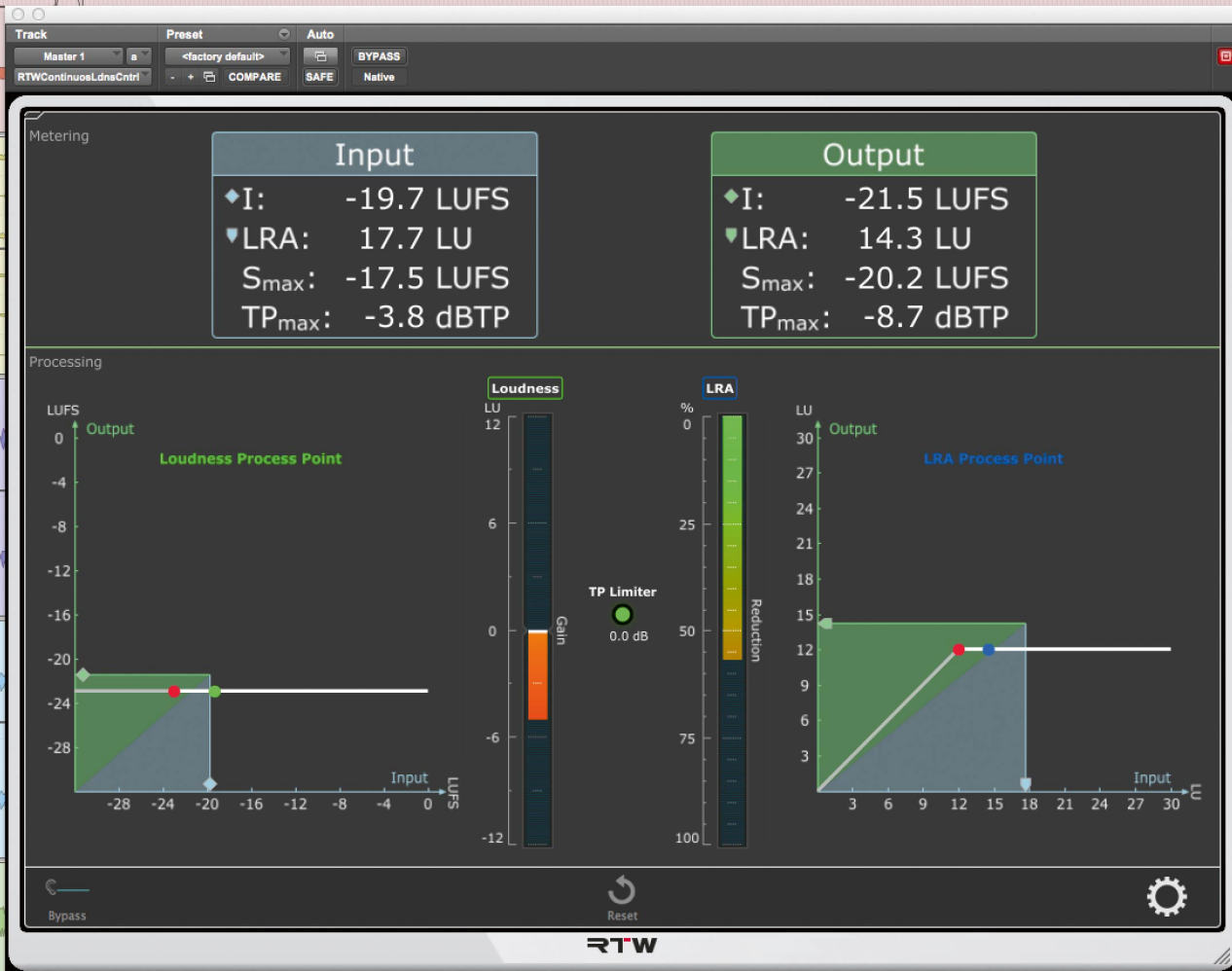


Masterclass Plugins

Continuous Loudness Control



The next generation audio processing in Live- and Postproduction, for TV and Radio.

“Continuous Loudness Control (CLC)” is a Masterclass Plugin featuring a unique visualization and patented loudness processing algorithm as a plug-in and stand-alone software. The amazing look-ahead low latency algorithm used in the CLC allows dynamic loudness processing of unknown live audio and audio files to a given loudness value with or without changing the original Loudness Range and protects to an adjustable True Peak value. CLC further improves the quality of loudness

processing with various enhancements like batch processing of audio files, extended audio format support, (e. g. MXF) an expert mode for very special material, Mmax and Smax limiting, report functions, and optimized presets for e. g. streaming audio. CLC is the next generation audio processing for Live- and Postproduction, TV and Radio.

Masterclass Plugins

Continuous Loudness Control

CLC technology allows users to constantly adapt the level of audio they are working on, against a given program-loudness value, along with a definable loudness range in real-time with minimal obstacles. The CLC algorithm "learns" during processing about the dynamic structure and intention of the sound signal, and adopts its processing constantly to predict what comes next. CLC software is best for handling Live audio, DAW audio, and audio files.

But also broadcasters are kept in mind, as they receive many different types of audio files (e. g. MXF) and have to prepare them for transmission. Therefore, CLC's batch mode offers automated and unattended loudness analysis and processing of audio files. Incoming audio files from different sources are

processed according to predefined settings for e. g. different genres; the output is stored in the target folder together with optional report files. Optimized presets and the Expert mode allow to better match requirements for different types of programs and distribution channels.

CLC may be operated with the most common DAW software products with Mac and PC and also as a standalone software tool. With CLC technology, users are able to maintain accordance with EBU R128 and other global loudness standard specifications.

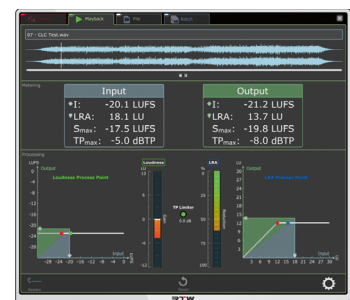
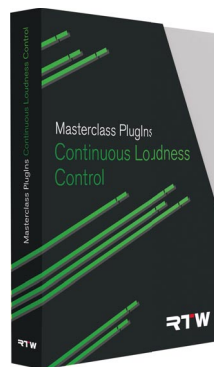
PACE Anti-Piracy and a PACE iLok copy-protection are used for handling the licence management and software activation.

Key Features

- Live audio, DAW audio, and audio files
- Batch processing
- Extended audio format support (e. g. MXF)
- Loudness acc. to all global standards
- Adjustable Target Loudness & Loudness Range (LRA)
- Adjustable TP Limiter
- Mmax and Smax limiting
- Expert mode to process very special audio material
- Optimized presets for e. g. streaming audio
- Loudness reporting (Java Runtime Environment required)
- Dynamic Low Latency Algorithm
- Adaptive Morphing Technology
- Stand-alone application and DAW-Plugin
- Common plug-in formats for Windows® and Mac® OS X
- Multichannel (single-user/network) or Stereo licenses
- iLok copy protection (iLok USB Smart Key recommended, not included in delivery)

Minimum System Requirements

- Dual-core-processor 2.5 GHz
- 4 GB RAM, 200 MB Hard disk space
- Operating systems
 - Windows®
 - Mac® OS X
- iLok License Manager 5.0 or higher and iLok user account
- Internet connection required for activation process



Order No.: SW50400

© 08/2020 | All rights reserved. Changes without prior notice | PICLPE03
All other products and company names contained herein are ™ and ® of their respective holders.

RTW GmbH & Co. KG
Am Wassermann 25 | 50829 Koeln | Germany
Phone: +49 221. 70 913-0 | Fax: +49 221. 70 913-32
Internet: www.rtw.com | E-Mail: rtw@rtw.com

RTW
EYES ON YOUR AUDIO