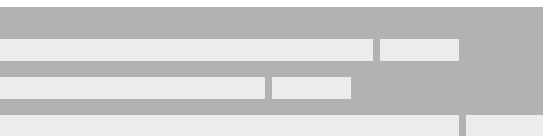
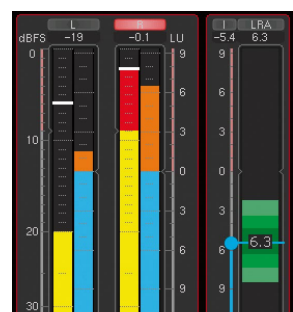
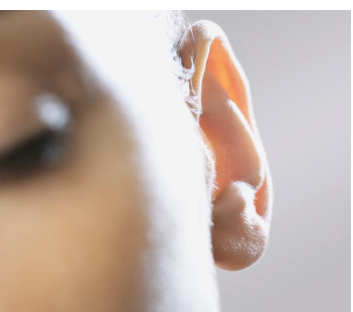


# Loudness Simplified TouchMonitor TM3 Smart



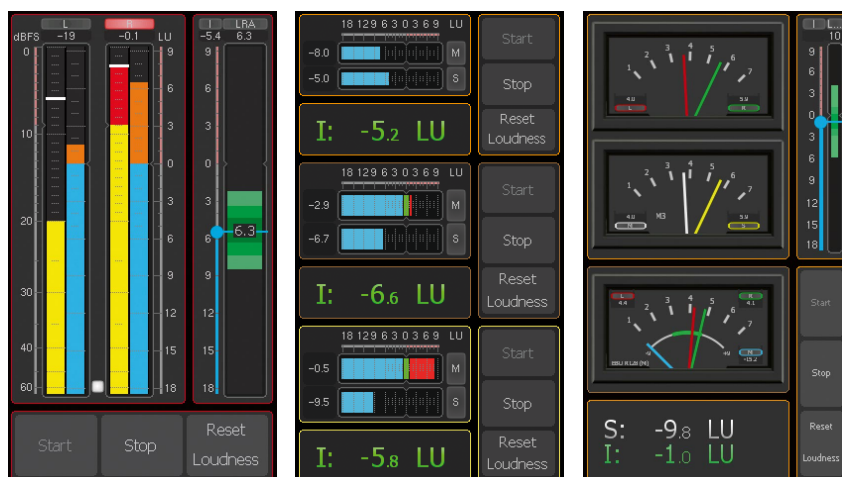
# TouchMonitor TM3 Smart



## Loudness Simplified

**Professional Loudness, True Peak and PPM metering at an affordable price with easy and flexible preset control.**

The compact TouchMonitor TM3 Smart comes with a capacitive 4.3" touch screen for vertical or horizontal use and intuitive preset control. With its feature list, it is the ideal solution for editorial offices, edit suites, and small control rooms. It handles analog or digital stereo and digital 6-channel signals.





- 4.3" Touch screen for vertical or horizontal use
- Flexible display layout with scalable instruments
- Separate interface box with audio I/O, USB, GPIO
- Audio: analog balanced/unbalanced, S/PDIF, AES3
- Stereo/6-channel operation
- Retrofittable software license for 6-ch. measurements
- Loudness: EBU R128, ITU-R BS.1770-4/1771-1, ATSC A/85, ARIB, OP-59, AGCOM, CALM, custom
- Single channel and summing loudness bargraphs
- Loudness Test Time Control, Loudness Chart option
- Loudness range (LRA) with MagicLRA
- PPM & True Peak, Correlation
- Moving Coil option (needle instruments)
- SPL & Dialnorm
- Time Code Reader option
- Numerical display
- Comprehensive set of presets
- Devicer DC1 (Device Configurator software for Windows® & Mac OS X® 10.6. to 10.9.)



The TouchMonitor TM3 Smart is an entry-level metering solution consisting of a display unit with 4.3" touch screen for vertical or horizontal use and a separate interface box. The TM3 Smart's flexible user interface allows for quick and simple preset selection. Presets can be configured in detail using the Devicer DC1 for Mac OS X® or Windows®. The Devicer's GUI lets you select, configure and position the instruments you need in a convenient way. The screen layout can be previewed any time so that you always see how your preset will look like on the TM3 Smart.

Besides PPM and True Peak instruments, the TM3 Smart features comprehensive loudness measuring features conforming to all relevant international standards (EBU R128, ITU-R BS.1770-4/1771-1, ATSC A/85, ARIB, OP-59, AGCOM, CALM Act). Loudness instruments include single-channel and summing bargraphs, loudness range, loudness chart (option) and numerical displays. With the Moving Coil option relevant values may be displayed on needle instruments.

**TM3 Smart. Loudness Simplified.**

# Product Overview

## TouchMonitor TM3 Smart Table-top Unit (2-Channel to 6-Channel)

consisting of a display unit with 4.3" touch screen for vertical and horizontal operation, a remote interface box (one cable for data and supply, approx. 2 m), and external power supply

Order no.: **TM3S**

## TouchMonitor TM3 Smart Rack-mount Unit (2-Channel to 6-Channel)

consisting of a rack-mount display with 4.3" touch screen in a mounting frame for horizontal operation, a remote interface box (one cable for data and supply, approx. 2 m), and external power supply

Order no.: **TM3S + TM3-2U**

### Display Options (Display Unit)

Flexible screen layout with scalable instruments	Loudness measurement: EBU R128, ATSC A/85 ITU-R BS.1770-4/1771-1 ARIB, OP-59, AGCOM, CALM, custom	Single channel and summing loudness bargraphs, Loudness Test Time Control	Loudness Range (LRA) with MagicLRA	Numerical loudness Display	SPL measurement	Peak and True Peak measurement	Correlation	Comprehensive set of Dialnorm measurement presets (Personalizing rement with Devicer DC1*)
--	---	---	------------------------------------	----------------------------	-----------------	--------------------------------	-------------	--

\*) Devicer DC1 is the Device Configurator software for Windows® and Mac OS X® for personalizing the units. This software is available for download in the download area of RTW's web site (Support/Manuals & Software).

### Connection Options (Interface Box)

	Input Analog* (unbalanced)	Input Analog* (balanced)	In-/Output S/PDIF (digital, unbalanced, 75 Ω)	In-/Outputs AES3 (digital, balanced, 110 Ω)	USB	GPIO	+24 V DC
Type	Stereo (L, R)	Stereo (L, R)	Stereo In, Stereo Out	3 x Stereo In, 3 x Stereo Out	Full Speed 2.0	Remote control	Supply voltage
Connector	2 x RCA (150 mV to 30 V, via potentiometer)	25-pin Sub-D +6 dBu (0 to +10 dBu, via software)	2 x RCA	25-pin Sub-D	Mini-B Data transfer between Devicer DC1 and TM3	RJ-12 (6P6C) External function or preset control	Type Binder 710 locking 4-pin low voltage connector

\*) Cannot be used in parallel!

### Accessories

**TM3-MA2U** 19"/2U rack carrier/mounting frame to be fitted with up to two units with TM3-2U

**1161** Extension cable 10 m, enlarges the distance display unit and interface box up to 12 m

**1163** Snake cable, 2 m, 25-p. Sub-D to 8 XLR-M (for AES3 Out)

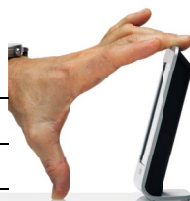
**1166** Mounting plate with 3/8" thread for display unit to be mounted to e.g. goosenecks, mic stands

**1178-R** Wide voltage power supply (100 - 240 V AC/24 V DC 2.71 A)

**Dimensions** W x H x D in mm (approx.)

Display Unit 82,5 x 138 x 50

Interface Box 146 x 29 x 85



Windows is either registered trademark or trademark of Microsoft Corporation in the United States and/or other countries. Mac OS X is trademark of Apple Inc., registered in the U. S. and other countries.

© 03/2019 | Changes without notice | PITM3E01

RTW GmbH & Co. KG

Am Wassermann 25 | 50829 Koeln | Germany

Phone: +49 221. 70 913-0 | Fax: +49 221. 70 913-32

Internet: www.rtw.com | E-Mail: rtw@rtw.com

**RTW**  
EYES ON YOUR AUDIO